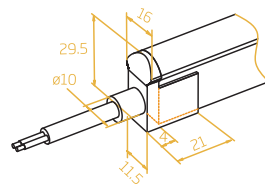


### Silicone Injection-moulded Front Connector-End



FXN – 1129 – C – SIM – FE

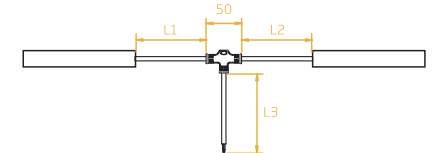


### Silicone Injection-moulded Middle Connector & Power T-Feed

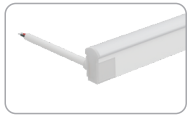


FXN – 1129 – C – SIM – TF

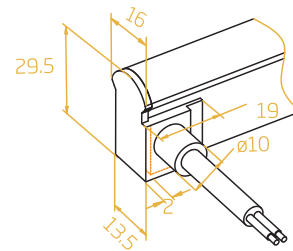
L1 and L2 available in 300mm.  
L3 available in 300mm/1000mm/3000mm.



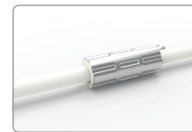
### Silicone Injection-moulded Front Connector-Side



FXN – 1129 – C – SIM – FS

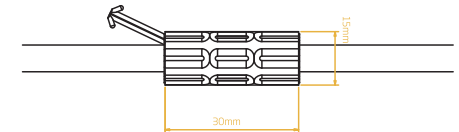


### Anti-wicking Ferrule



The anti-wicking ferrule is located at 115mm (±10mm tolerance) from the connector on the cable.

For protection against water ingress from inside of cable wire and hence damage the light.

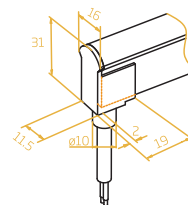


- Note:
1. Unless otherwise stated, the tolerance of the connector is  $\pm 0.5\text{mm}$ .
  2. To avoid damage from excessive force on cable joint, please keep at least 60mm of cable ahead in the natural state.

### Silicone Injection-moulded Front Connector -Bottom



FXN – 1129 – C – SIM – FB



### Silicone Injection-moulded End Cap



FXN – 1129 – C – SIM – EC

